

About Us

Old World Masonry is located on the Kingston Peninsula, in a small rural community just outside of Saint John, New Brunswick. We have been serving Architects, Home Owners, Contractors and various Heritage Committees for over 18 years with incredibly positive feedback. The most common gratitude expressed is for the proven workmanship and beauty that has stood the test of time as well as esthetical appeal. When we say "European Style Stonework" what we're really saying is that all work is done for enduring quality and beauty, just as in Ludwig's country of origin, Germany.

Ludwig Hartmann, the CEO & president of Old World Masonry Ltd., studied and performed his masonry apprenticeship in his home country of Germany. He brings to this business more than 30 years of experience as a European Style Stonemason.

Our friendly and knowledgeable staff will work with you to ensure you receive exactly what you want, whether you provide your own design, choose to have us design it for you or restore/replicate an original. We are dedicated to complete customer satisfaction with tenacious attention to detail and pride of accomplishment.

Featured in this brochure are beautifully crafted fireplace mantles carved out of solid sandstone, limestone, granite or marble that we have designed over the last few months. Feel free to contact us with your particular design ideas.



We pride ourselves on the highest quality workmanship and full customer satisfaction.

FIREPLACE MANTLES

Additional Fireplace Mantles crafted by Old World Masonry can be viewed on our website – www.owmasonry.com

U.K. Sandstone



S.L. Barrie Granite



Wallace, N.S. Sandstone



Our Newest Projects



Let Our
PASSION ...
... Be Your
INSPIRATION

Ludwig Hartmann
39 Gorhams Bluff Rd.
Kingston, NB E5N 1A1

Phone: (506) 763-2414
Email: ludwig@owmasonry.com

www.owmasonry.com

Walkways and Stairs

Walkway made from granite cut, trimmed and installed by Old World Masonry.



A walkway and stone wall, located in Grand Manan Island, NB, created and installed by Old World Masonry.

Limestone stairs cut, trimmed and installed by Old World Masonry.



Sandstone stairs and bulkheads handcrafted in the shop of Old World Masonry and installed by a local contractor.

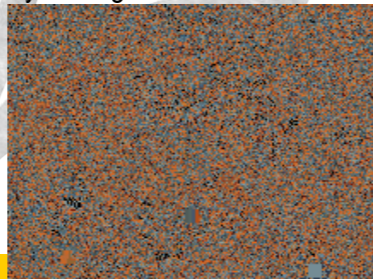
Replication / Stone Carving



A replication of a pinnacle by OWM from one of the many historical buildings in the city of Saint John, New Brunswick which was installed (as shown below) by a local contractor.



A replicated Cornice above and a stone cap below - hand carved by Ludwig Hartmann



Close-up detailed view of one of our stone carvings.

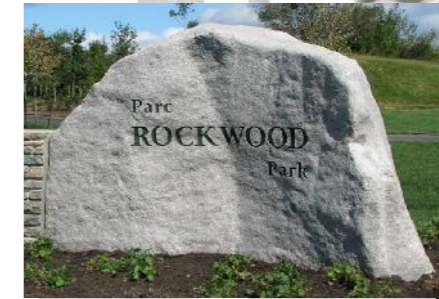


Sculptured Stone

A stone wall and fountain designed and constructed by the team at Old World Masonry.



Stone Sign Sculptured and hand engraved for the Rockwood Park entrance in Saint John, NB.



This Sandstone Monolith for the John Peters Humphrey Foundation, consists of two pieces of sandstone. The one to the right is hand-engraved with the Declaration of Human Rights in four languages. The one to the left has a fountain of water trickling down from the top and over the hand hewn stone. This monument is located at the Courthouse in Hampton, NB.



The style and look of Newels and Rails are only limited by your imagination.

